



# Welcome to Science with Ms. Ellsmore!



**email:** [emily.ellsmore@ncsota.org](mailto:emily.ellsmore@ncsota.org)

I am happy to help and want everyone to be successful! Please email if you have questions, concerns or confusion. The best times are 8am-3pm Monday through Friday.

**GOAL:** You will engage in learning science topics that cover an awesome range of biology, chemistry, physics and earth science. We will experiment, engineer, and explore! We will also learn valuable skills that are fundamental to high school science success!

**MATERIALS:** you need to have the following with you *every class*:

- Science lab notebook & folder
- Pencils, pens, highlighter



## CLASS RULES



- **BE Respectful of others, materials and school**
- **BE Positive, Prepared, and Productive**
- **BE KIND & SAFE!**

- **Electronic devices should be turned off out of site during class.** UNLESS we are using them as part of an experiment project (ex: timer, stopwatch, level, photo, video etc.). I'll let you know when it is OK!
- **Please no food and drinks in class.** Only water bottles that can be sealed and put away.
- **Science Starters are completed in your notebook at the start of class.** Have all of your materials ready and pencils sharpened before class starts.
- Science can be fabulously messy! **Clean up as a team before the end of class** and always remember to do your part to handle materials with care and put away in the proper location. Teams that leave a mess will stay after class to clean up ☺

## SAFETY

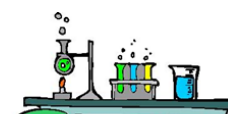


### SCIENCE SAFETY

When we are conducting experiments, there are times when we will use chemicals, sharp or fragile objects, hotplates, burners, and projectile objects. At other times, we will hike on campus with spiders, ticks, poison oak and snakes. Sounds exciting, right?! BUT SAFETY FIRST!

### ALWAYS!!!

- Be curious and explore while using common sense and care for yourself and others!
- Work together with team members using the assigned lab jobs
- Follow all instructions for set up/clean up and directions for hikes
- Wear eye protection, tie back long hair & loose clothing when using chemicals or flames
- Report all accidents, broken equipment and spills immediately to the teacher
- Avoid skin contact with chemicals and heat (alert teacher and flush with water)
- Wipe lab table and wash your hands after all lab experiments
- Work with team members cooperatively to complete tasks

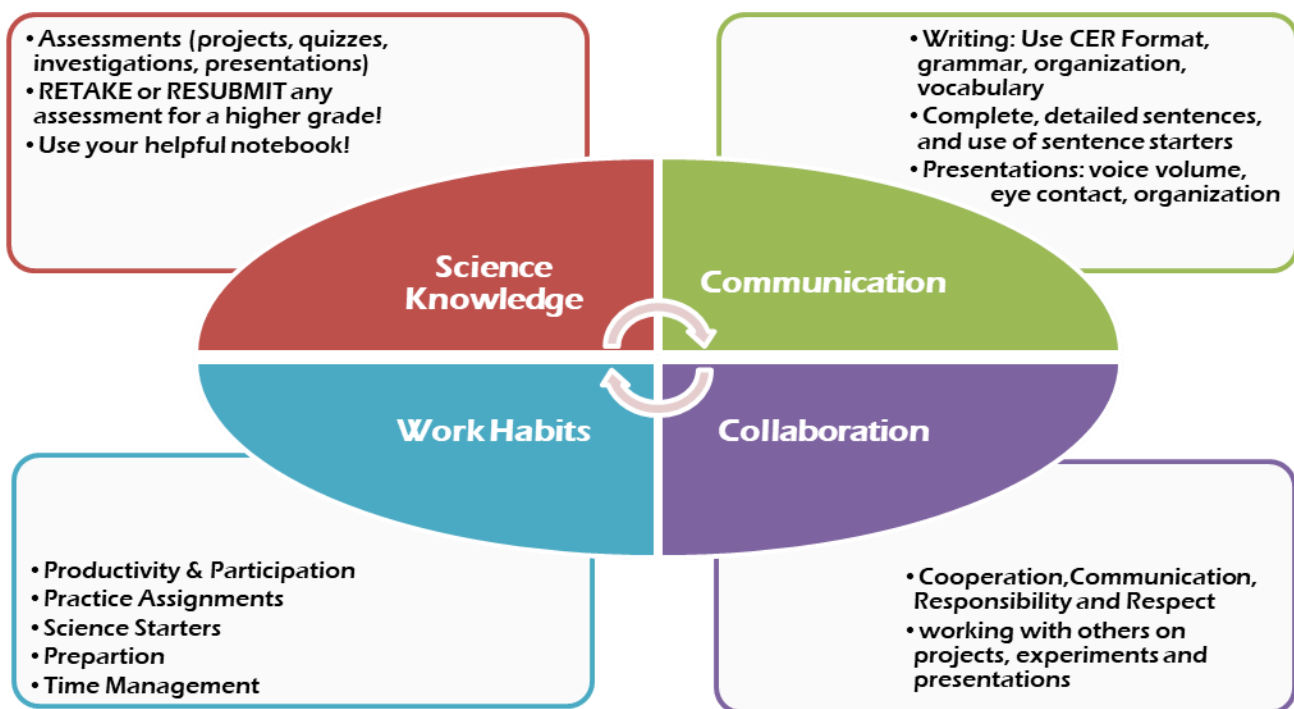


- Complete a tick self-check after hikes and alert others to arachnid hazards

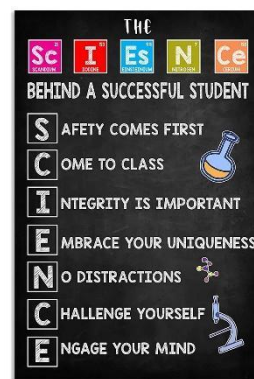
**NEVER!!!**



- Conduct unauthorized experiments
- Eat or drink during an experiment to avoid contamination
- Place any materials in the sink without permission
- Taste things in the lab (unless instructed to do so)
- Throw objects, run, or play in a hazardous way inside or outside the classroom

## GRADES



- **Student VUE on Synergy** is where your full grades are shown on a scale of 1-4 in terms of proficiency (see box below). If you have questions about your grade, please ask!
- **Google Classroom (GC)** is the place to check for assignment materials and completion grades. If you are **absent**, it is your responsibility to check GC and check in with teacher to get caught up with assignments. Please email if you have questions when absent.
- **Assignments and assessments are to be completed with integrity.** Meaning...CHEATING ON ASSESSMENTS, COPYING OR ALLOWING OTHERS TO COPY ANY WORK WILL RESULT IN A SCORE OF ZERO AND WILL NECESSITATE A PARENT-TEACHER CONFERENCE.



STANDARDS-BASED GRADING SCALE			
4	MASTERY		Student has mastered the standard and knows the information very well!
3	PROFICIENT		Student has learned the grade-level standard! That's the goal!
2	DEVELOPING	Almost there! Student needs support and more practice to help them achieve the learning standard. Resubmit higher quality work and/or retake assessments.	
1	INSUFFICIENT		
0	NO EVIDENCE	No work completed to grade. Make sure to get things done and turned in!	

**It's going to be a science-tastic year!**